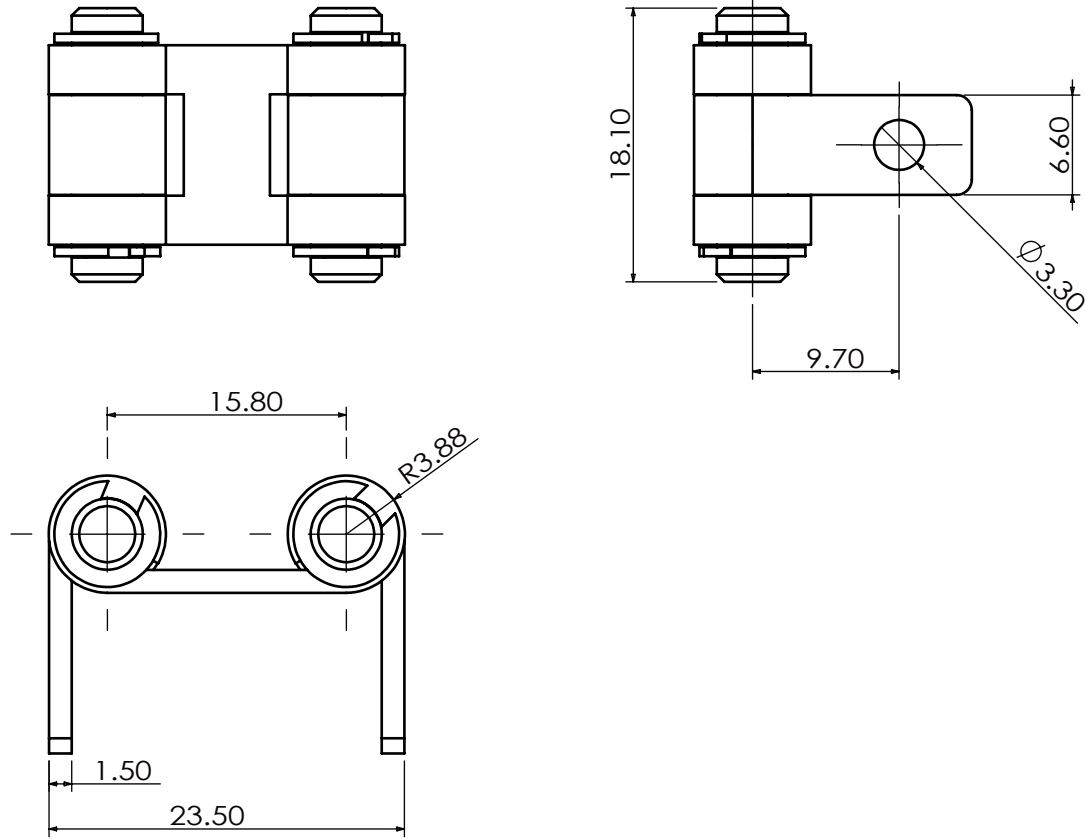


1	Date	Revisions	Staff
	****	*****	**



- 注:1.扭力:
- 2.寿命:
- 3.带圆圈尺寸为重点尺寸.
- 4.表面镀无化学镍3~6μm
- 5.倒角均为:C0.3
- 6.一般公差:±0.2.
- 7.使用产品必须符合ROHS要求。

001	组装图			****	****	1	
No.	Parts Name			Materials	Treat	Q'ty	Remarks
Approved	Checked	Drawn	Designed	Date	Tolerance	Customer	
				2019.2.26	L < 1 0.05		
				Scale	Angle	DWG Name	*****
				1:1	* ° 4 < L ≤ 16 0.15		
Jiaxing yujia Machinery Co.,Ltd				Unit	mm	DWG No.	SD2184A10000
				16 < L ≤ 63 0.2			
				63 < L 0.25			